



THE FUTURE OF TOWN HALL THEATER

***A NEW PERFORMING ARTS CENTER...
AND SO MUCH MORE***











Builders
 1293 Route 7 South
 Middlebury, VT 05753
 P (802) 388-9871
 F (802) 388-3815
 www.breadloaf.com

Civil Engineer
 Otter Creek Engineering
 404 East Main Street
 East Middlebury, VT 05740
 P (802) 382-8122

Structural Engineer
 Engineering Ventures
 208 Flynn Avenue, Suite 2A
 Burlington, VT 05401
 P (802) 863-6225

Mechanical Engineer
 Vermont Mechanical
 P.O. Box 728
 Williston, VT 05495
 P (802) 862-5900

Electrical Engineer
 M&J Electrical Contractors
 1571 VT Route 100
 Westfield, VT 05874
 P (802) 368-9678

Fire Protection
 P.O. Box 961
 Colchester, VT 05446
 P (802) 999-2670

© 2023, Bread Loaf Corporation

Seal

Issue / Revision History
 No. Date Description

Sheet Issue Date: 06/26/23
 00000001 04/000000

**TOWN HALL
 THEATER ANNEX**

FLOOR PLAN PLAZA



Civil Engineer
Oster Creek Engineering
404 East Main Street
East Middlebury, VT 05740
P (802) 382-8522

Structural Engineer
Engineering Ventures
208 Flynn Avenue, Suite 2A
Burlington, VT 05401
P (802) 863-6225

Mechanical Engineer
Vermont Mechanical
P.O. Box 728
Williston, VT 05495
P (802) 862-5900

Electrical Engineer
MEI Electrical Contractors
1571 VT Route 100
Westford, VT 05374
P (802) 988-9878

Fire Protection Engineer
P.O. Box 961
Colchester, VT 05446
P (802) 999-2670

© 2023, Bread Loaf Corporation

Seal:

Issues / Revision History		
No.	Date	Description
1	05-12-2023	Progress Bar

Sheet Issue Date: 05/12/2023
Drawn by: [Signature] Checked by: [Signature]

**TOWN HALL
THEATER ANNEX**

**BUILDING SECTION
SITE E/W**

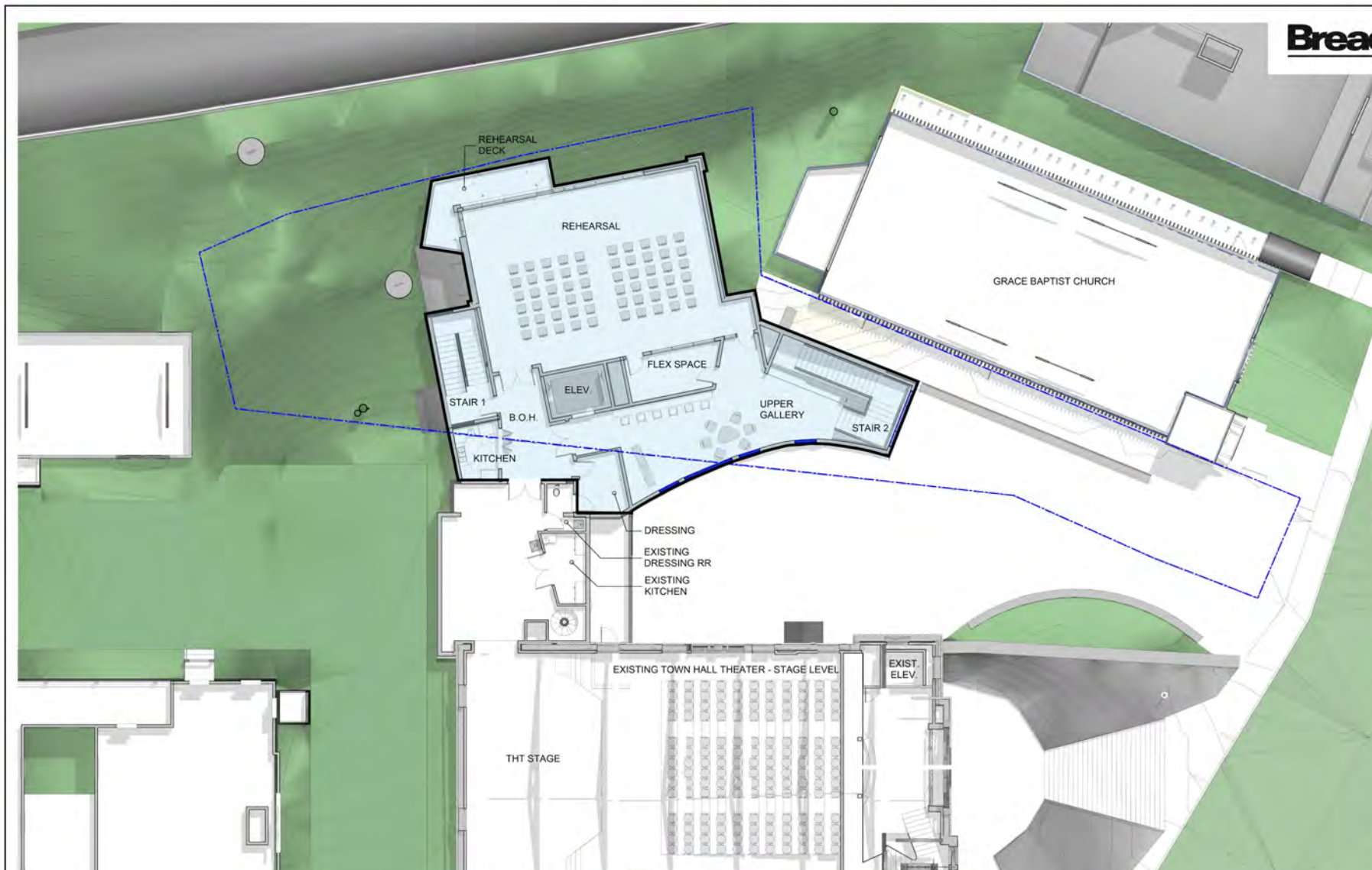
Middlebury, VT
PROJECT NO. 21468

A-301









BreadLoaf

Architects
Planners
Builders

1293 Route 7 South
Middlebury, VT 05753
P (802) 388 9871
F (802) 388 3815
www.breadloaf.com

Civil Engineer

Otter Creek Engineering
404 East Main Street
East Middlebury, VT 05740
P (802) 382-8522

Structural Engineer

Engineering Ventures
208 Flynn Avenue, Suite 2A
Burlington, VT 05401
P (802) 863-6225

Mechanical Engineer

Vermont Mechanical
P.O. Box 728
Williston, VT 05495
P (802) 862-5900

Electrical Engineer

MEI Electrical Contractors
1571 VT Route 100
Westfield, VT 05874
P (802) 988-9678

Fire Protection

P.O. Box 861
Colchester, VT 05446
P (802) 999-2670

© 2023, Bread Loaf Corporation

Seal:

Issue / Revision History
No. Date Description

Sheet Issue Date: 06/26/23

Drawn by: C. COOPER

TOWN HALL
THEATER ANNEX







1203 Route 7 South
Middlebury, VT 05753
P (802) 388 9871
F (802) 388 3815
www.breadloaf.com

Civil Engineer
Otter Creek Engineering
404 East Main Street
East Middlebury, VT 05740
P (802) 382-8522

Structural Engineer
Engineering Ventures
208 Flynn Avenue, Suite 2A
Burlington, VT 05401
P (802) 863-6225

Mechanical Engineer
Vermont Mechanical
P.O. Box 728
Wilton, VT 05495
P (802) 962-5900

Electrical Engineer
MEI Electrical Contractors
1571 VT Route 100
Westfield, VT 05874
P (802) 988-9678

Fire Protection
P.O. Box 861
Colchester, VT 05446
P (802) 969-2670

© 2023, Bread Loaf Corporation

Seal

Issue / Revision History
No. Date Description

Sheet Issue Date: 06/26/23
Drawn by: JMC/2023

**TOWN HALL
THEATER ANNEX**

**FLOOR PLAN SUB
LEVEL**





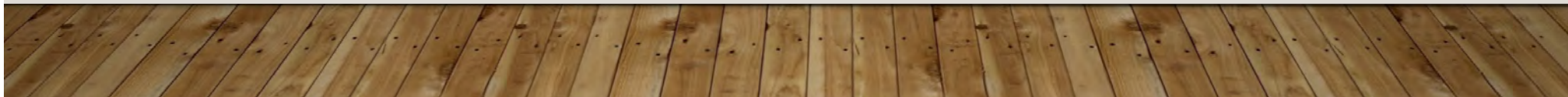








A MODERN BUILDING WITH HISTORIC INTEGRITY







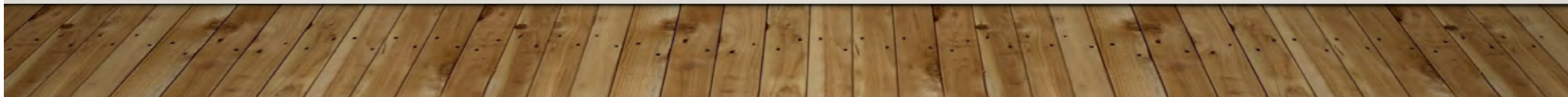








A WELCOMING, VIBRANT PUBLIC PLAZA





05.27.2022

MIDDLEBURY TOWN HALL THEATER | OVERALL CONCEPTUAL LANDSCAPE PLAN

DONOR
RECOGNITION
PAVING BANDS

LOW PLANTING
BELOW WINDOW
HEIGHT

MOVEABLE
PLANTERS, TYP.

MOVEABLE MODULAR
STAGE

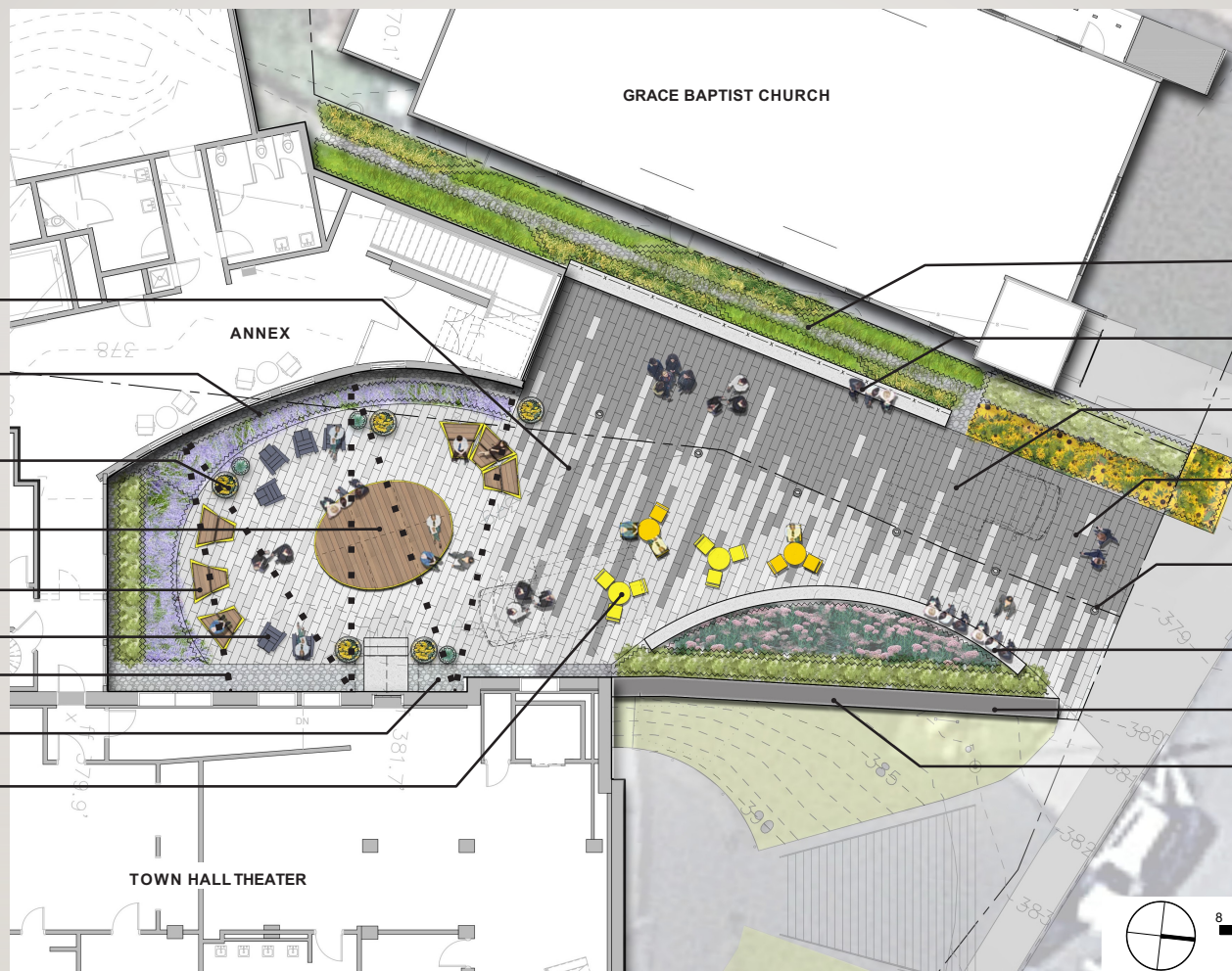
TIERED SEATING

ADIRONDACK CHAIRS

CATENARY LIGHTING

STONE DRIP EDGE

MOVEABLE TABLES
AND CHAIRS, TYP.



DRAINAGE SWALE

SEATWALL WITH
RAILING

TEMPORARY FOOD
TRUCK PARKING, TYP.

LINEAR PAVING
"CARPET"
HIGHLIGHTING ENTRY

IN-GRADE
"THEATRICAL"
PATHWAY LIGHTING

SEATWALL

EXISTING WALL

UPLIGHTING AT
EXISTING WALL AND
HISTORIC BUILDING



05.27.2022

MIDDLEBURY TOWN HALL THEATER | CONCEPTUAL LANDSCAPE PLAN ENLARGEMENT



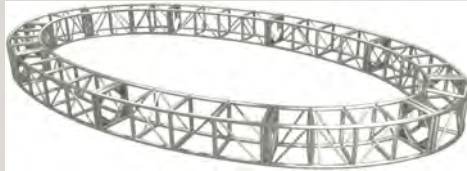
TIERED MOVEABLE SEATING



PILL SHAPED STAGE



ELLIPTICAL STAGE



TRUSS FOR CUSTOM STAGE



MOVEABLE TABLES AND CHAIRS



ADIRONDACK STYLE CHAIRS



CONCRETE SEATWALL



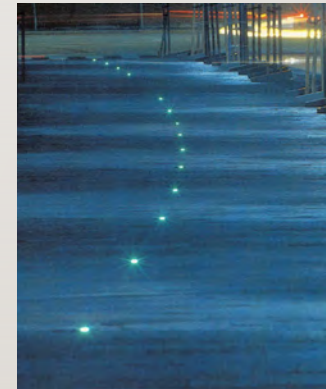
PLAZA PAVING



WALL UPLIGHTING



CATENARY LIGHTING



IN-GRADE LIGHTING









A PLACE FOR EVERYONE



THIS NEW PERFORMING ARTS CENTER IS...

- Much more than a building. It's a cultural anchor for Addison County and beyond.
- A shared resource for artists, non-profits, businesses, educators – now and for generations to come.
- A destination that unites a diverse cross-section of our community around unique, shared experiences.
- An inclusive, inviting space for everyone.



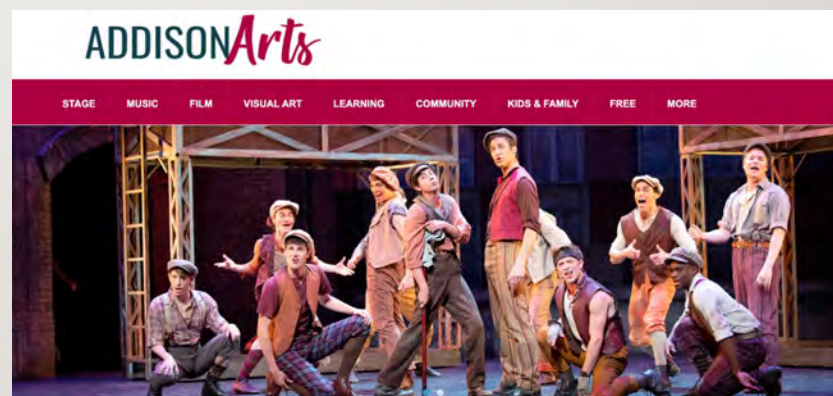
IN 15 YEARS, THT HAS HOSTED...

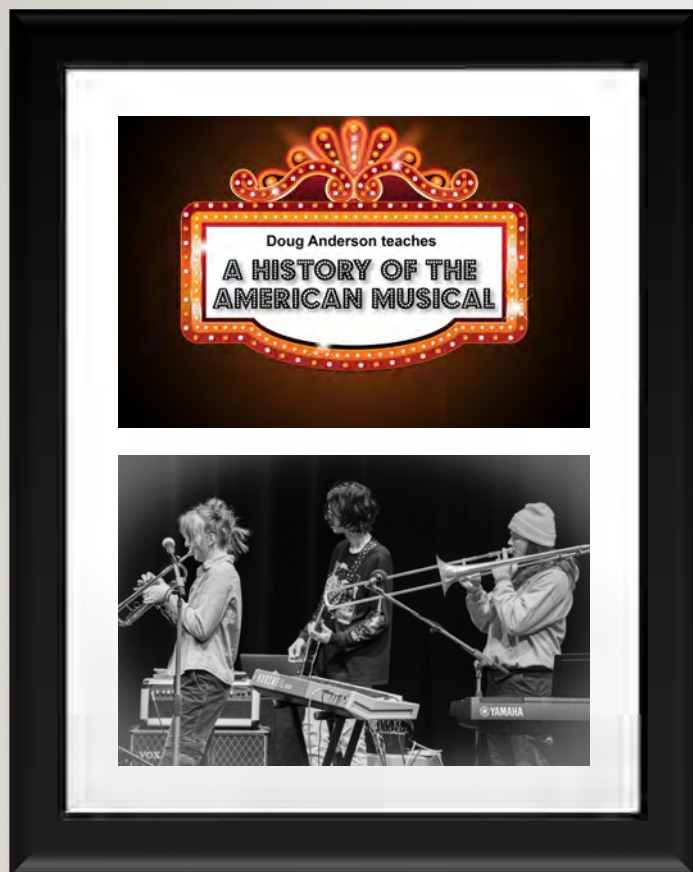
- A dozen resident companies
- 2,500 performances, thousands of artists and more than half a million visitors.
- Patrons from 156 VT towns, 29 states and more than a dozen countries.



INTO THE FUTURE, THT OFFERS EVEN MORE...

- NEW annual outdoor events across Addison & Chittenden Counties – many of them FREE.
- NEW digital streaming – livestream, recording, classes and more.
- NEW Arts & Culture Calendar funded by the Vermont Arts Council – creating a one-stop epicenter for all things cultural in Addison County.





NEW SPACE MEANS NEW LEARNING OPTIONS...

- **Current programming:**
 - Offers 10-15 classes and camps annually, ages 6 to adult.
 - Reaches 12 schools, 3 districts, 800 kids, 70 teachers.
- **The future of THT Education will see:**
 - NEW Education programs expand exponentially to offer a wide variety of classes, workshops, and trainings for kids and adults.
 - Diverse instructors beyond the performing arts, including visiting educators - even professors from Middlebury College.
 - Community partnerships with local organizations continue to mature and grow, even beyond our walls.
 - Cutting-edge scene shop and tech education opportunities for hands-on learning.

INCREASED OPPORTUNITIES FOR AUDIENCES + ARTISTS INCLUDE...

- 30% more main stage performances!
- Rehearsal studio doubles as an intimate performance space, and a stunning room for weddings, fundraisers, meetings -- supported by a catering kitchen.
- Public plaza features FREE programming, including live music, arts pop-ups, markets, food trucks, and more.



MERCHANTS ROW ARTS & CULTURE CORRIDOR



THIS PROJECT WILL STIMULATE THE LOCAL ECONOMY

- Did you know: The arts and culture sector is a \$1.1 billion state contributor.
- Expanded programming drives local economic ripple effect to restaurants, retail, hotels.
- THT expansion grows local jobs for new staff, artists and educators.



KEY GOALS INCLUDE...



- Creating a welcoming, accessible hub for learning, performing and gathering.
- Driving broad-reaching economic benefits.
- Broadly expanding THT's mission-driven work and community partnerships.
- Securing THT's future as a sustainable, regional organization serving generations to come.



FUNDRAISING & TIMELINE

BUDGET OVERVIEW

Construction:
\$6,607,204

Design, Professional Fees:
\$579,052

Owner's Costs + Site Fees:
\$368,631

TOTAL:
\$7,554,887

FUNDRAISING:
\$4,810,562

REMAINING:
\$2,744,325



EXPANSION TIMELINE



Honoring the diner



Groundbreaking



Construction timeline



